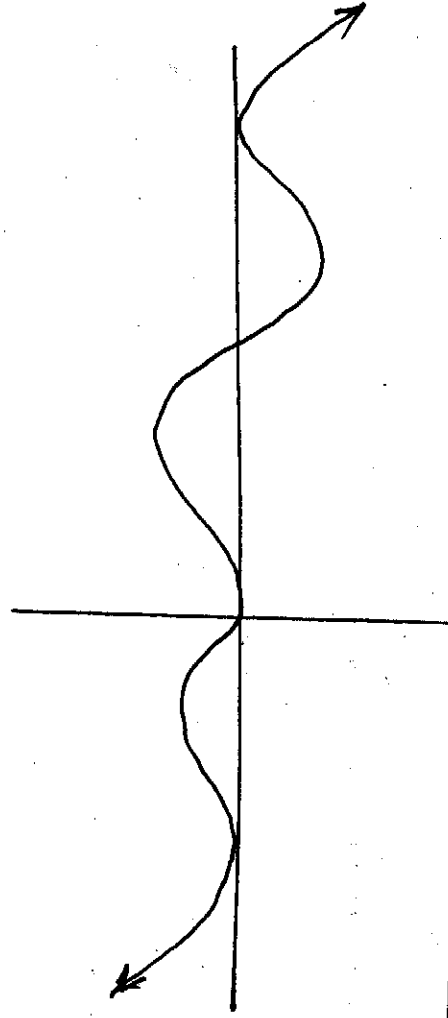
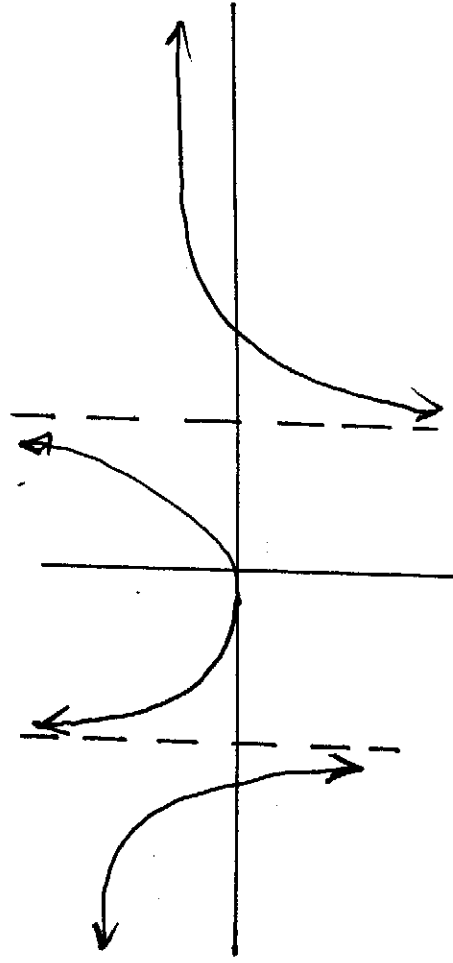
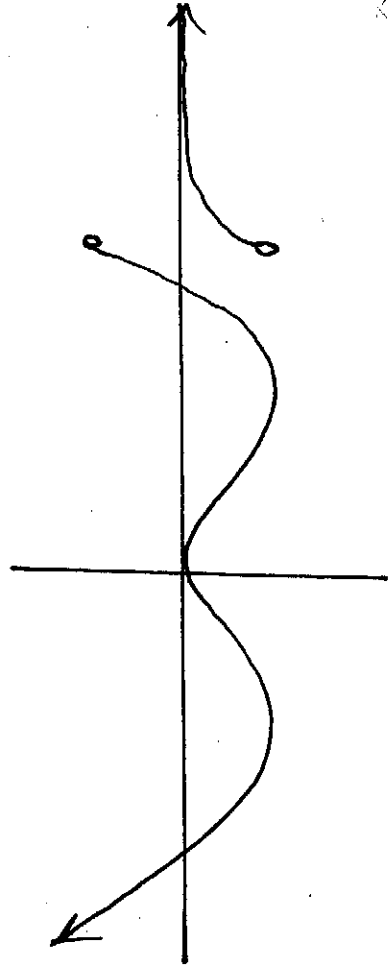
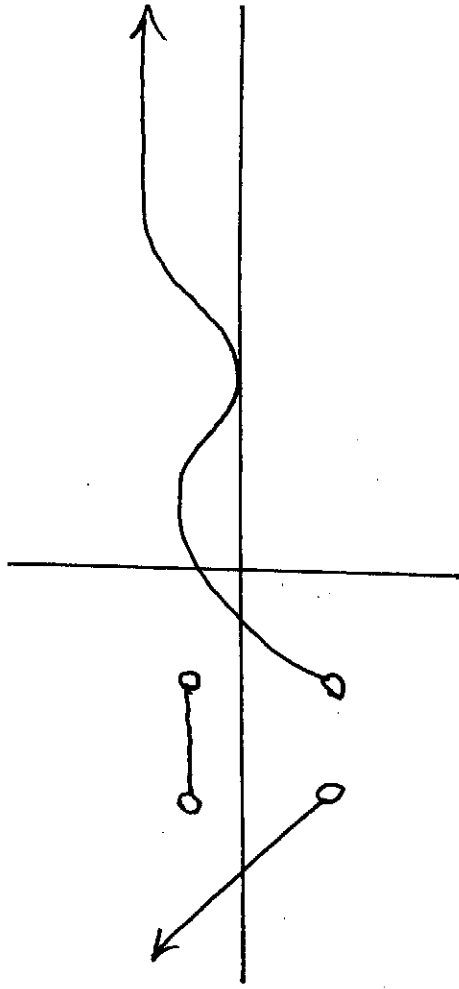
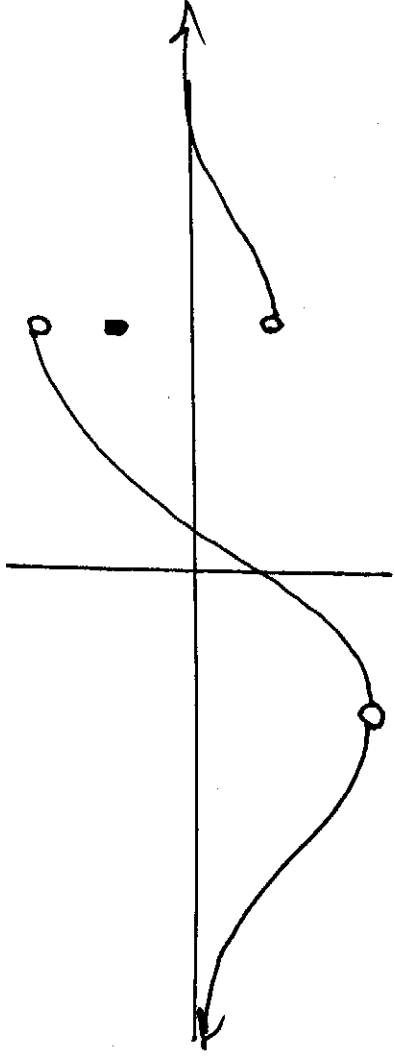
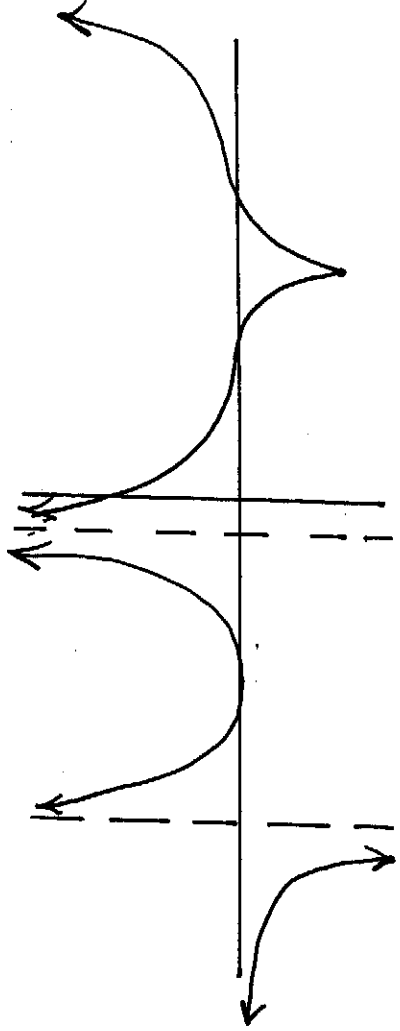
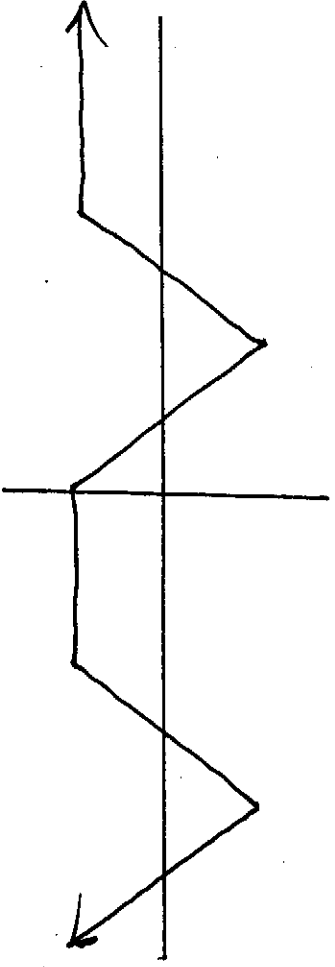
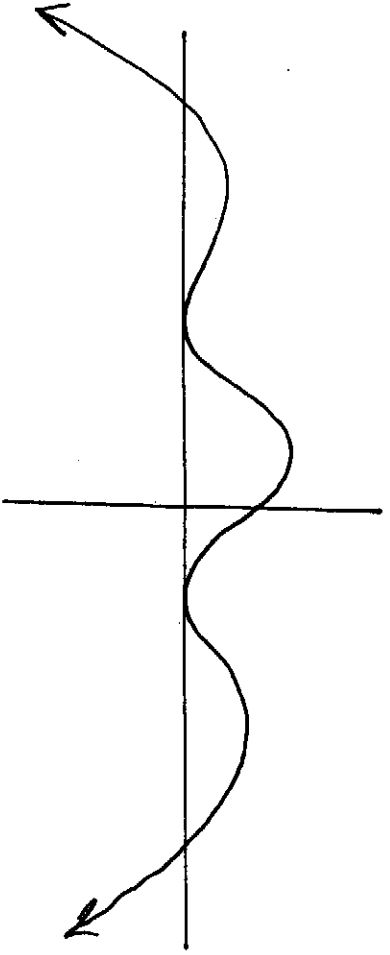


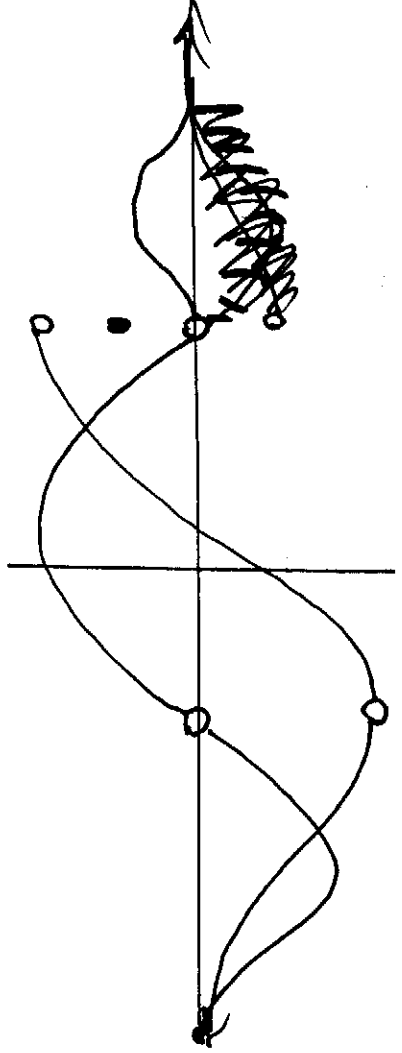
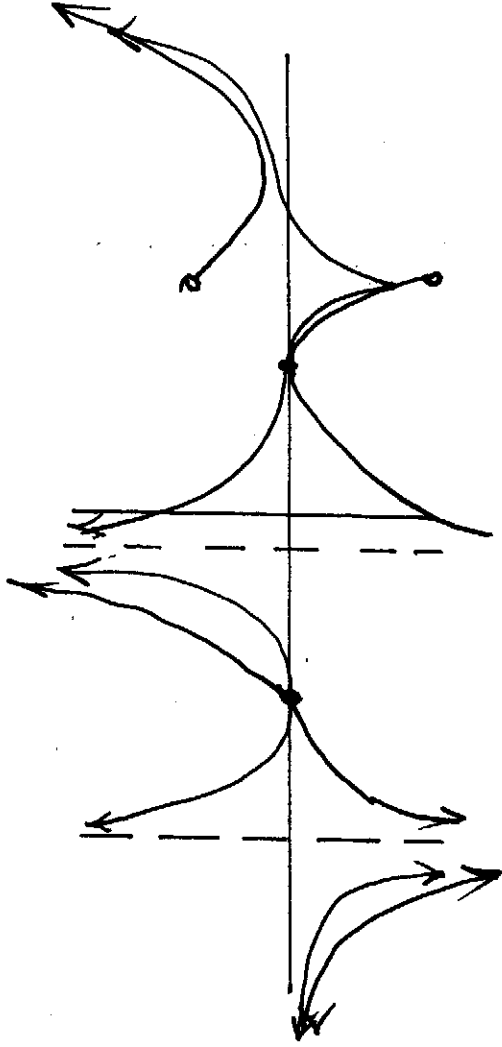
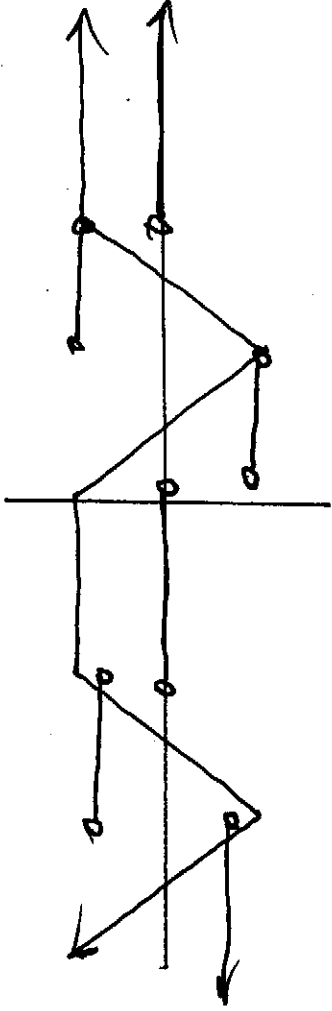
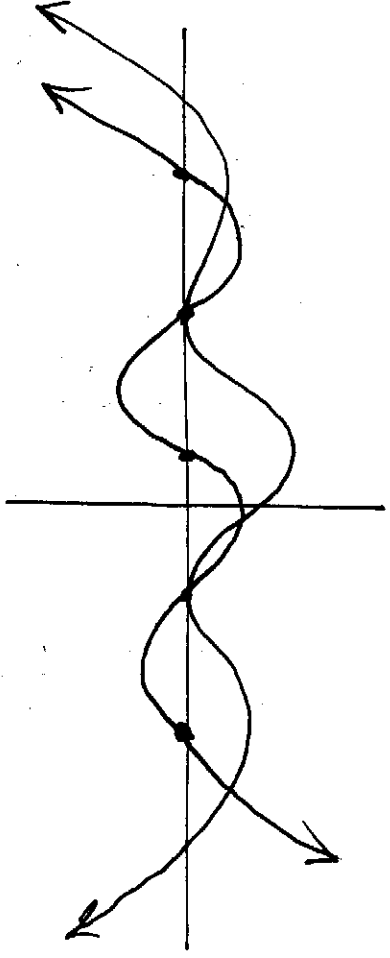
SKETCH  $f(x)$  from  $f'(x)$  shown



SKETCH  $f'(x)$  from  $f(x)$  shown



SKETCH  $f'(x)$  from  $f(x)$  shown



SKETCH  $f(x)$  from  $f'(x)$  shown  
 MAY BE  
 DISCONT.  
 (a)

key

